

www.jcmglobal.com

For updates on JCM Global products, services, and events, follow JCM Global on Facebook®, LinkedIn®, Twitter™ and YouTube™



facebook.com/JCMglobal

twitter.com/jcmglobal

linkedin.com/company/jcm-global

youtube.com/jcmglobal

Parts are Parts

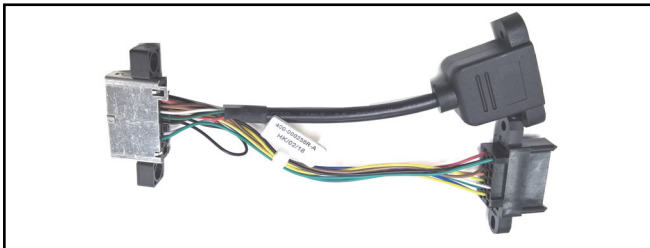


Figure 1 Test Harness, iVIZION® to UBA® with USB (P/N 400-000258R)

Part No. 400-000258R

Description: Test Harness, iVIZION to UBA with USB

Usage: The Test Harness, iVIZION to UBA with USB (**Figure 1**) is a universal adapter that can be used for testing of the iVIZION Banknote Acceptor using existing UBA connections for RS-232 or Photocoupler communications, as well as a USB connection. The Test Harness allows testing of iVIZION Units from a Host Controller that supports USB Communications.

Note: The USB Connection accepts a Standard Male A to Male B USB Device Cable.

Latest JCM Software Listing

UNIT	Country	ID	Version	Check Sum	CRC
UBA-10/11-SS	USA	ID-003	V-2.78-51	D6F5	0653
UBA-10/11-SS	USA	ID-024	V-2.78-24	9478	0C33
UBA-14/24-SS/SU	USA	ID-003	V-2.78-39	C51D	9914
UBA-14/24-SS/SU	USA	ID-0G8	V-2.80-74	8062	8DD4
UBA-14/24-SS/SU	USA	ID-024	V-2.78-36	5CC9	9374
UBA-14/24-SS/SU	USA	ID-028	V-2.78-25	91A6	8F70
iVIZION-100 SS/SU	USA	ID-003	V-2.80-42	02A1	964D
iVIZION-100 SS/SU	USA	ID-008	V-2.56-20	3B11	1534
iVIZION-100 SS/SU	USA	ID-024	V-2.80-15	AA27	271B
iVIZION-100 SS/SU	USA	ID-028	V-2.80-30	1021	E2E1
iVIZION-100 SS/SU	USA	ID-0G8	V-2.80-38	1905	C088
UBA-10/11-SS	CAN	ID-003	V-2.81-52	24C1	FEBA
UBA-10/11-SS	CAN	ID-024	V-2.81-25	87B8	AEA1
UBA-14/24-SS/SU	CAN	ID-003	V-2.81-40	3109	9914
UBA-14/24-SS/SU	CAN	ID-024	V-2.81-37	1A1F	1206
UBA-14/24-SS/SU	CAN	ID-028	V-2.81-25	66EB	2DE2
UBA-14/24-SS/SU	CAN	ID-0G8	V-2.81-74	B102	0A60
iVIZION-100 SS/SU	CAN	ID-003	V-2.81-42	1C45	DC01
iVIZION-100 SS/SU	CAN	ID-024	V-2.81-15	5E3D	31EA
iVIZION-100 SS/SU	CAN	ID-028	V-2.81-30	EFEE	67F1
iVIZION-100 SS/SU	CAN	ID-0G8	V-2.81-38	1285	628F

The Latest JCM Software Listing (shown above) identifies specific software versions that have been released to OEMs. It is the responsibility of the OEM to obtain all required approvals from Gaming Regulators and Jurisdictional Authorities necessary for use of approved software versions. Contact the Game Manufacturer (OEM) for information on specific software releases approved for use within your gaming jurisdiction.

JCM recommends using the latest version for maximum acceptance, security, and performance.

JCM Service Offerings

JCM offers the following services to help keep your JCM Products performing within factory specifications:

- **Warranty and Non-Warranty Service and Repair**
- **Custom Training Classes**
- **Unit Exchange Programs**
- **Preventive Maintenance Programs**
- **ICB Data Analysis**
- **Validator Performance Analysis**

JCMedia™ Is The Source For All Your Video Needs!

JCMedia™ solutions incorporate the latest digital display technology (single screen to large scale video wall solutions), digital content creation services and networked solutions for all your media needs. JCMedia now offers the only upgradeable pixel pitch LED Displays using JCM's PIXELPRO™ Display Technology. PIXELPRO products combine unsurpassed color uniformity and the best pixel-to-pixel resolution available in the Gaming industry in an easy-to-install package. PIXELPRO MAX™ provides a high-resolution interlocking panel solution for large scale LED Video screens. PIXELPRO FLEX™ offers articulating panels for curved surface implementations, and PIXELPRO CUBE™ supports 3-D Video Displays. For more information, please visit the JCM Global website at jcmmedia.jcmglobal.com!





FREE REGIONAL TRAINING

Technicians need training, but is time or class availability a problem? JCM Online Training offers classes to meet your schedule and your needs. JCM Online Training Programs feature the same content as JCM On-site Training with the added convenience of flexible scheduling. Visit training.jcmglobal.com for more information or to register for classes.

Technical Bulletin 201806 June 2018

Technical Tip

Question: How many times can iVIZION Calibration Reference Paper be used?

Answer: For iVIZION Calibration Reference Papers:

- KS-72 (for use on Validator Heads without Bill Guides, EDP #201544) and
- KS-89 (for use on Validator Heads with or without Bill Guides, EDP #211266 - **Figure 2**)

JCM recommends that the Reference Paper be replaced after 400 Calibration procedures have been completed.

When the iVIZION Calibration Reference Paper becomes worn or dirty, the most common errors that occur are:

- 2313 (Upper UV Sensor) or
- 2413 (Lower UV Sensor) when the UV Sensor Calibration is started.

Note: Handle the iVIZION Calibration Reference Paper carefully. Do not touch the white cut-out areas! Do not set unprotected Reference Paper on the work bench. Return the Reference Paper to its protective housing when not in use.

For additional information on JCM Products, visit the JCM Global website at www.jcmglobal.com or contact your local JCM Sales Representative at (800) 683-7248.

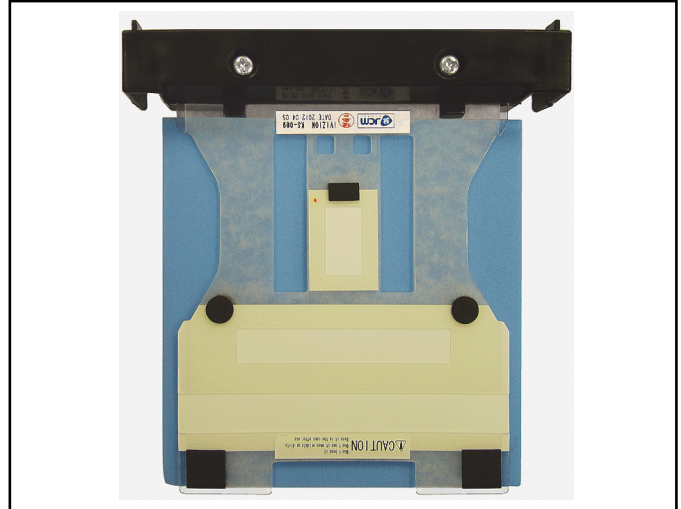


Figure 2: iVIZION Calibration Reference Paper KS-89 (EDP# 211266)

Current Service Manual Releases

Product	Rev.	Product	Rev.
DBV-30X	4	iVIZION	7
DBV-500 Operations Manual	1	Taiko (PUB-7/11)	6
DBV-400 Operations Manual	1	TBV	2
DT-200 BlueWave 2	7	TBV-101-ASH	A
EBA-40	2	UBA-10/11/14/24/25	3b
ICB Service Manual	4	UBA-RC	3
ICB 3.0 Web Reports Ops Manual	3	VEGA	4
iPRO	1	VEGA-RC	3
iPRO-RC	3	FL Operator & Technician's Manual	3
RC-10 Service Manual	1	GEN5 Operations Manual	2
JCM Tool Suite	4	BlueWaveDX Tool (DT-300)	A

To access JCM Product Manuals, please visit: www.jcmglobal.com



JCM TECHNICAL SUPPORT CONTACTS

Headquarters (Japan)

Sales and Service +81-3-5962-3731 hq-jp@jcmglobal.com

Europe, Middle East, Africa, Russia

Sales +49-211-530645-50
Service +49-211-530645-60 support@jcmglobal.eu

Australia, Oceania

Sales and Service +612 96 48 0811 australia@jcmglobal.com

Southeast Asia

Sales and Service +853 28 72 2684 asiastupport@jcmglobal.com

North/South America/Canada/Caribbean

Toll Free Product Support (800) 683-7248 or (702) 651-0000 support@jcmglobal.com

After Hours Americas Support

JCM American prides itself in offering the best Customer Service in the industry. We offer a 24 hour After Hours Hotline, where Technical Support Personnel can be reached at any time, 7 days a week. To reach our 24/7 After Hours Hotline:
1.) Call JCM American at (800) 683-7248.
2.) Select "Option 1" and wait for the call to be transferred to the JCM after hours Technical Support line.
3.) Speak with a certified JCM Support Technician about your situation.

JCM Global is a registered trademark of JCM American Corporation. All other product names mentioned herein may be registered trademarks or trademarks of their respective companies. Furthermore, TM and © are not mentioned in each case in this publication.